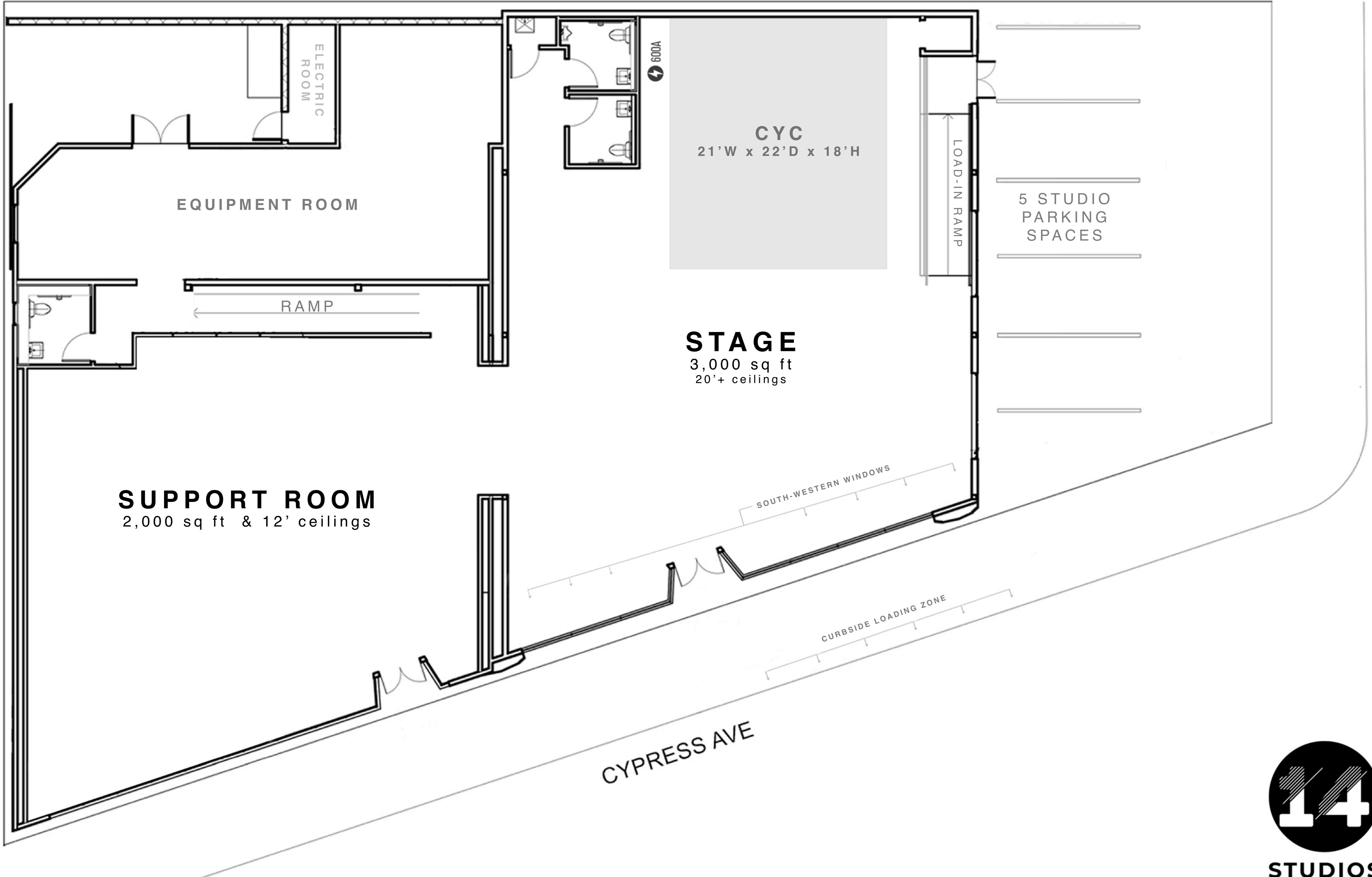


ALLEY

ROSEVIEW



EQUIPMENT ROOM

RAMP

**SUPPORT ROOM**  
2,000 sq ft & 12' ceilings

ELECTRIC ROOM

**CYC**  
21'W x 22'D x 18'H

**STAGE**  
3,000 sq ft  
20'+ ceilings

LOAD-IN RAMP

5 STUDIO  
PARKING  
SPACES

SOUTH-WESTERN WINDOWS

CURBSIDE LOADING ZONE

CYPRESS AVE



STUDIOS